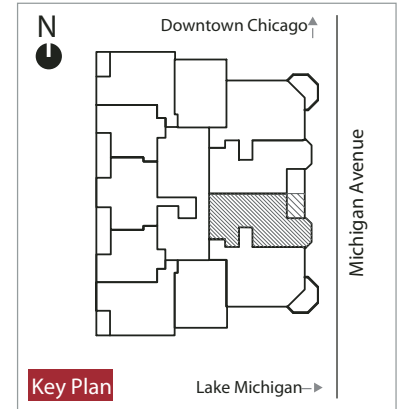
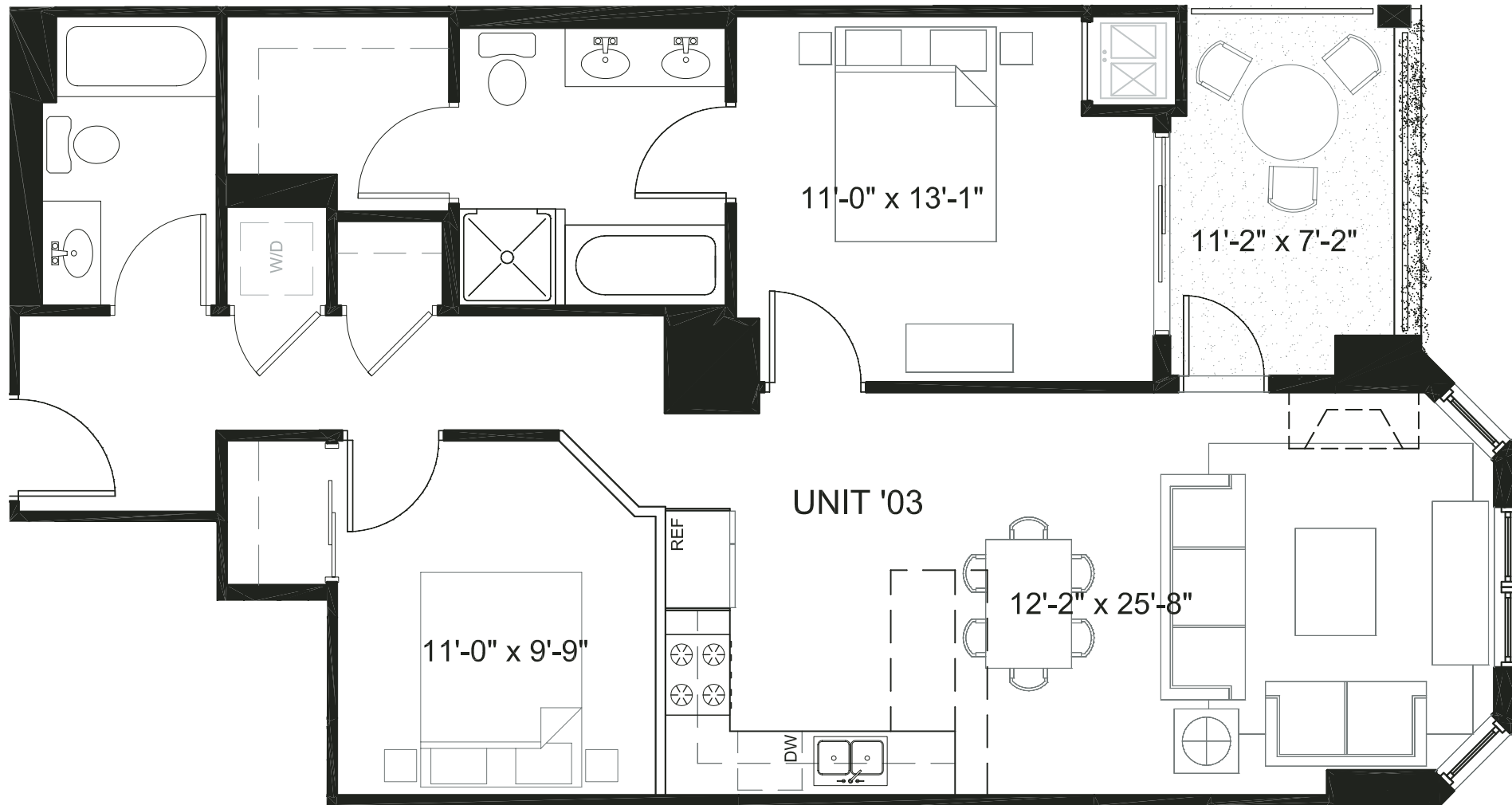


# TYPICAL UNIT 403 - 803



1454 S. MICHIGAN AVE.  
www.marqueechicago.com

**@properties**

Marquee Sales Center:  
**773-432-0200**

DEVELOPED BY  
**SEDGWICK**  
PROPERTIES  
Development Corporation

developer licenset579177

Developer reserves the right to change floor plans to accommodate structural and mechanical elements. Prices are subject to change without notice. Plans are artist's renderings. Dimensions are approximate and should not be used as precise measurements in establishing value. All plans and specifications are subject to change and may be revised without notice. Building materials are subject to be changed or substituted at Developers sole discretion and without notice.